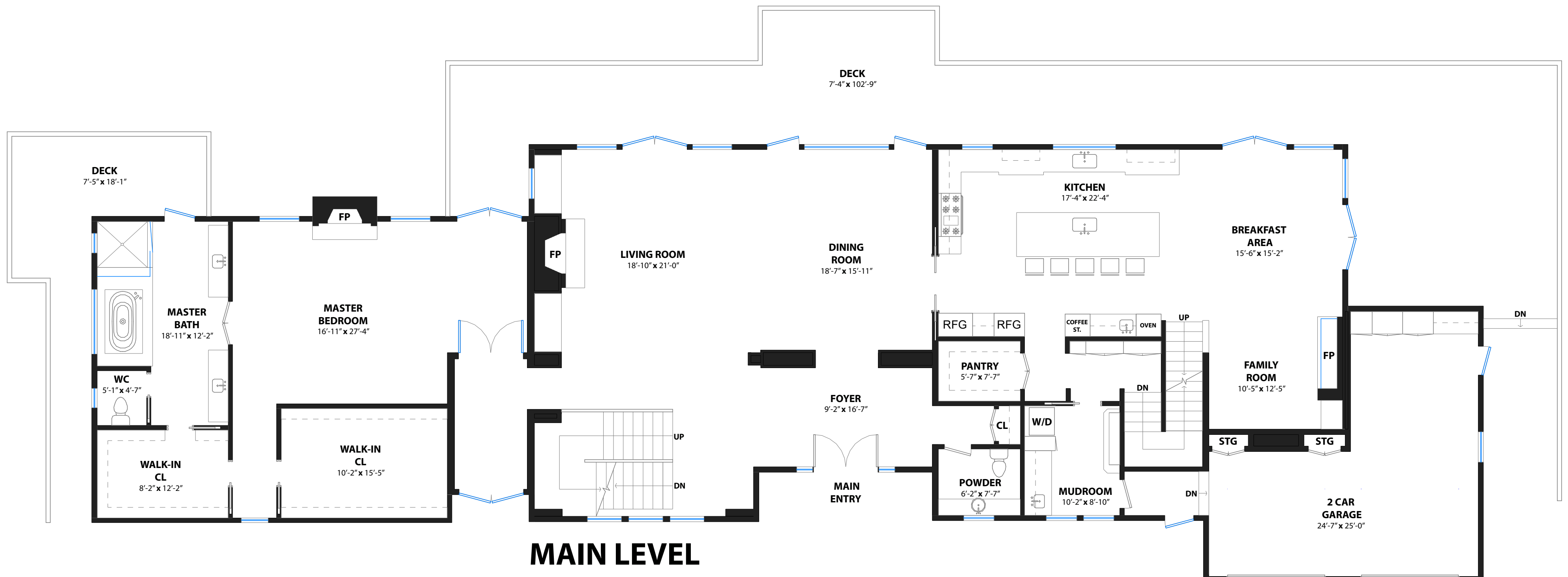


3300 PARADISE DRIVE

TIBURON, CALIFORNIA

PROPERTY SQF INFORMATION

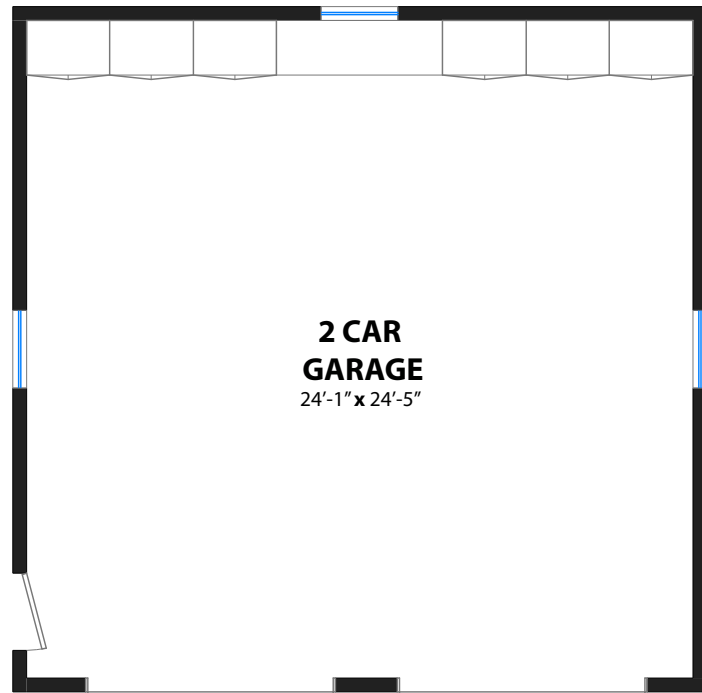
LIVING SPACE	
Square Footage:	9,060 Sq Ft*
* Upper Level	2,252
* Main Level	3,582
* Lower Level	2,174
* Pool House	427
* Studio	625
NON-LIVING SPACE	
Square Footage:	1,172 Sq Ft*
* Garage	534
* Detached Garage	638
APPROXIMATE TOTAL	
LIVING & NON-LIVING SPACE	
Square Footage:	10,232 Sq Ft*



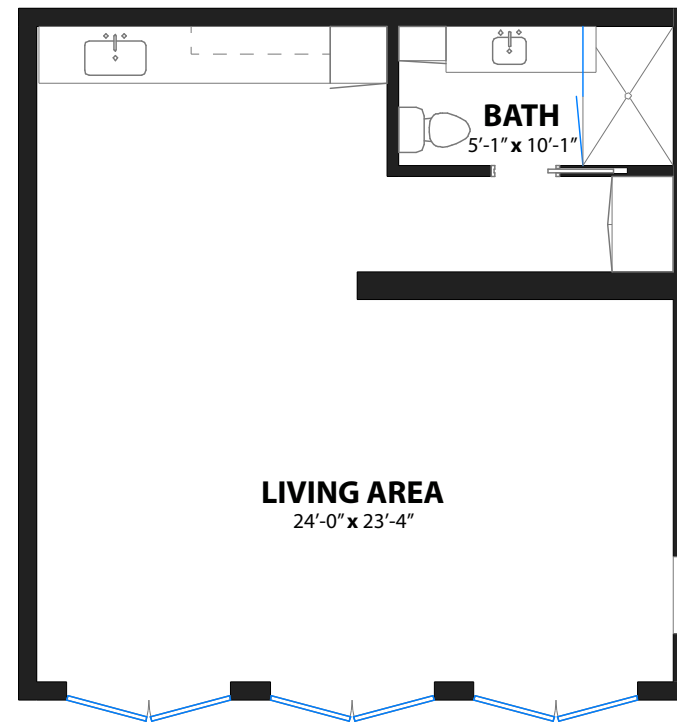
DISCLAIMER: RENDERING BY OPEN HOMES PHOTOGRAPHY. ALL MEASUREMENTS ARE APPROXIMATE AND MAY NOT BE EXACT. DO NOT RELY ON THE ACCURACY OF THIS FLOOR PLAN WHEN DETERMINING THE PRICE OF A PROPERTY OR MAKING DECISIONS REGARDING BUYING OR SELLING OF PROPERTIES WITHOUT INDEPENDENT VERIFICATION.

3300 PARADISE DRIVE

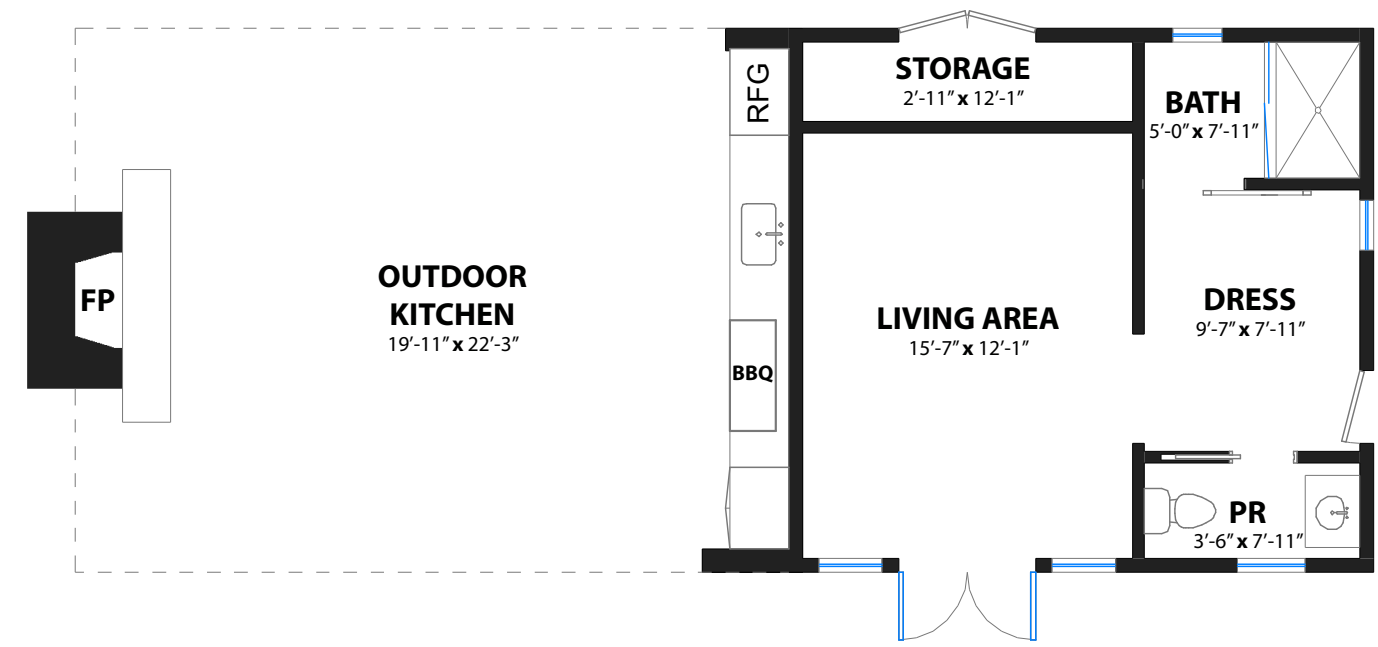
TIBURON, CALIFORNIA



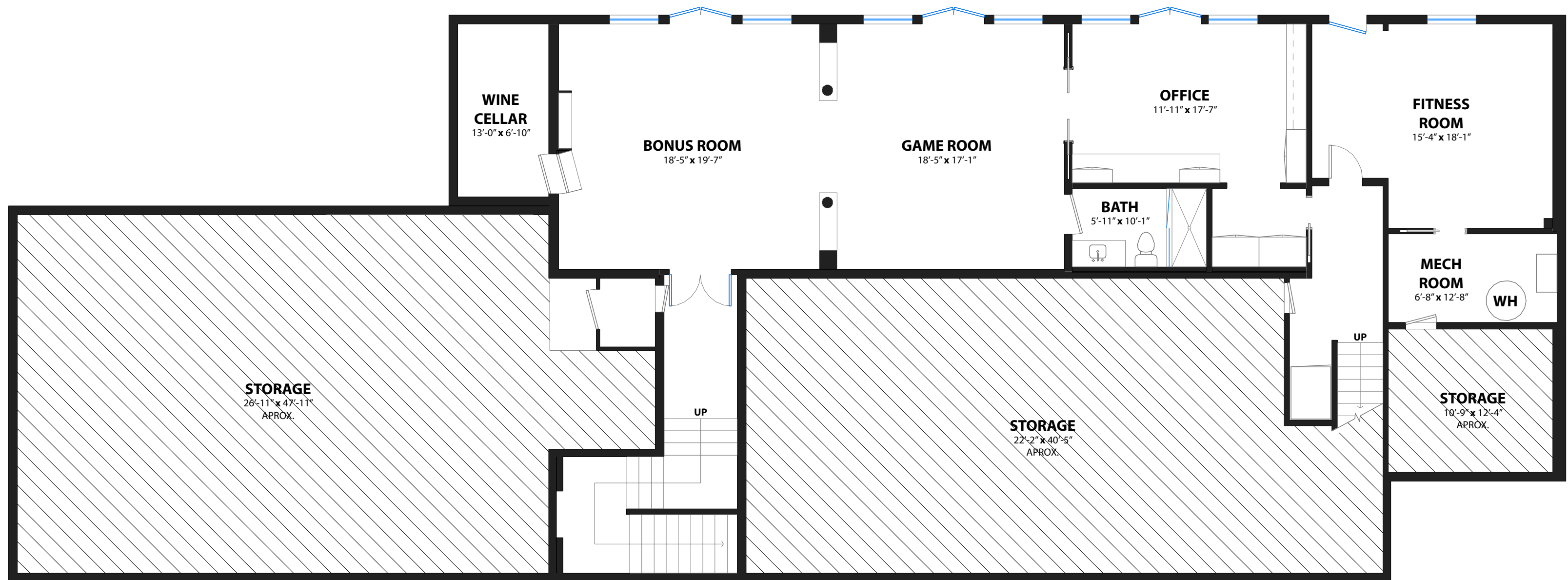
DETACHED GARAGE



STUDIO



POOL HOUSE



LOWER LEVEL